

POLARIS



1935



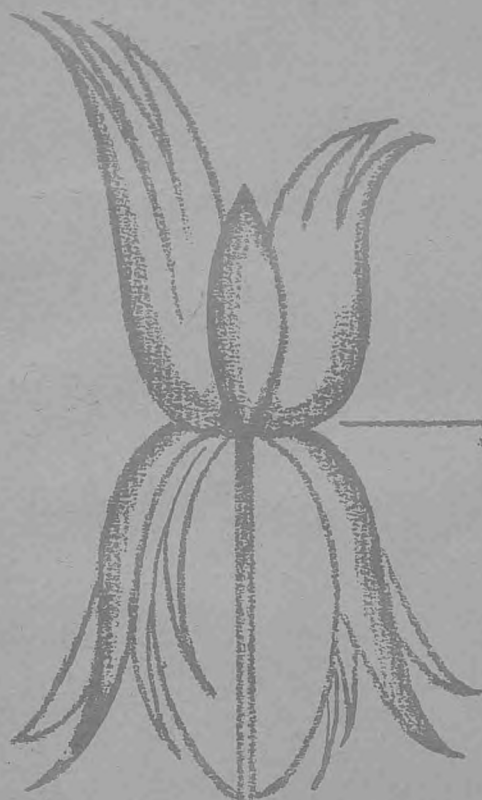


GC  
979.202  
R41NC,  
1935









# The Polaris

1935

Published by  
The Students  
of  
North Cache High School  
RICHMOND, UTAH









SCHOOL BUILDING, FRONT VIEW



SCHOOL BUILDING, SIDE VIEW





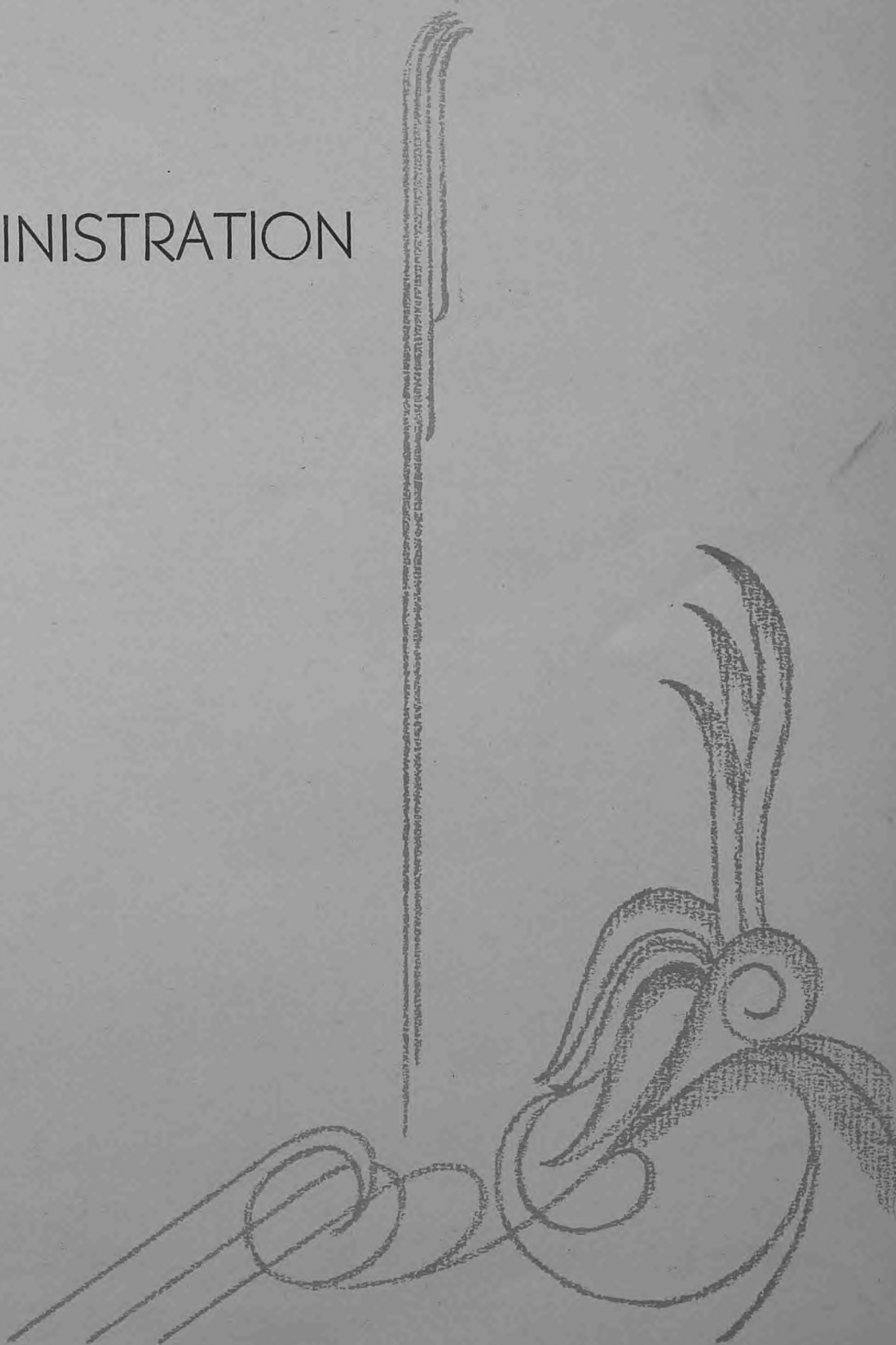
SEMINARY



SHOP



# ADMINISTRATION







PRINCIPAL C. I. STODDARD

In this little volume we have assembled ourselves in bonds of love and friendship. As years go by and as we sit by the fireside looking into each other's faces, may we remember only the good things—the happy experiences which we have had together.

## Faculty

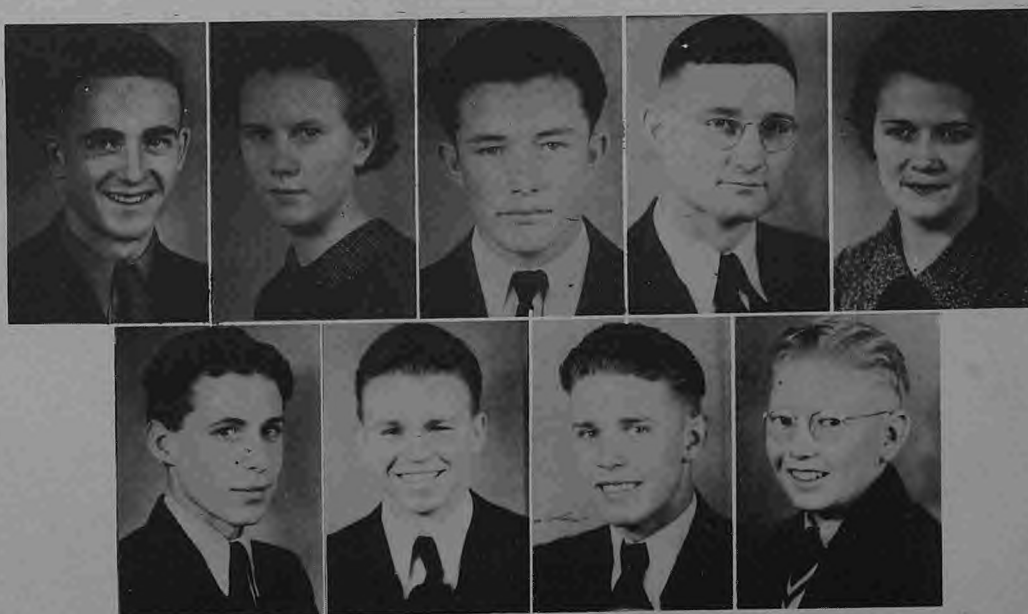


John H. Peterson, Gertrude Bentley, W. W. Perkins, L. C. Smith, Edna Pedersen, Heber Whiting, J. W. Pulsipher, Arta Larsen, C. B. Johnson, E. M. Van Orden, Frances Vernon, Norman Smith.



Marcus Cooley, Thelma Johnson, Glenn Winn, Alfrieda Olsen, Amos W. Bair, Wyona Hansen, E. B. Olsen, Grace S. Hawks, Ellis Doty, Ina Doty, F. D. Thatcher, Elsie Lewis, H. M. Wadsworth.

## Student Council



Frank Peterson, Rhonda Nelson, Howard Kent, Marcus Cooley, Thelma Johnson, Grant Peterson, Howard Frandsen, Darrel Pitcher, Dee Van Orden.





## Student Body Officers



Frank Peterson, president; Rhonda Nelson, Vice-President;  
Howard Kent, secretary.



R. C. Merrill, editor Norcachian; Faye Seamens, editor Polaris; Blaine Hancey, business  
manager Norcachian; Lynn Pitcher, business manager Polaris.



Arlene Griffin, assistant song leader; LaVan Hendricks, debating manager; Margaret Bow-  
man, song leader; Dick Lewis, athletic manager.

Phillip Bergeson, cheer leader; Cyne Napper, assistant cheer leader; Frank Meikle, assistant  
cheer leader; Erwin Stoddard, assistant cheer leader.

# Honor Students



MARIAN WEEKS  
*Valedictorian*



REED JOHNSON  
*Citizenship Award*



GWEN JOHNSON  
*Citizenship*

## Scholarship

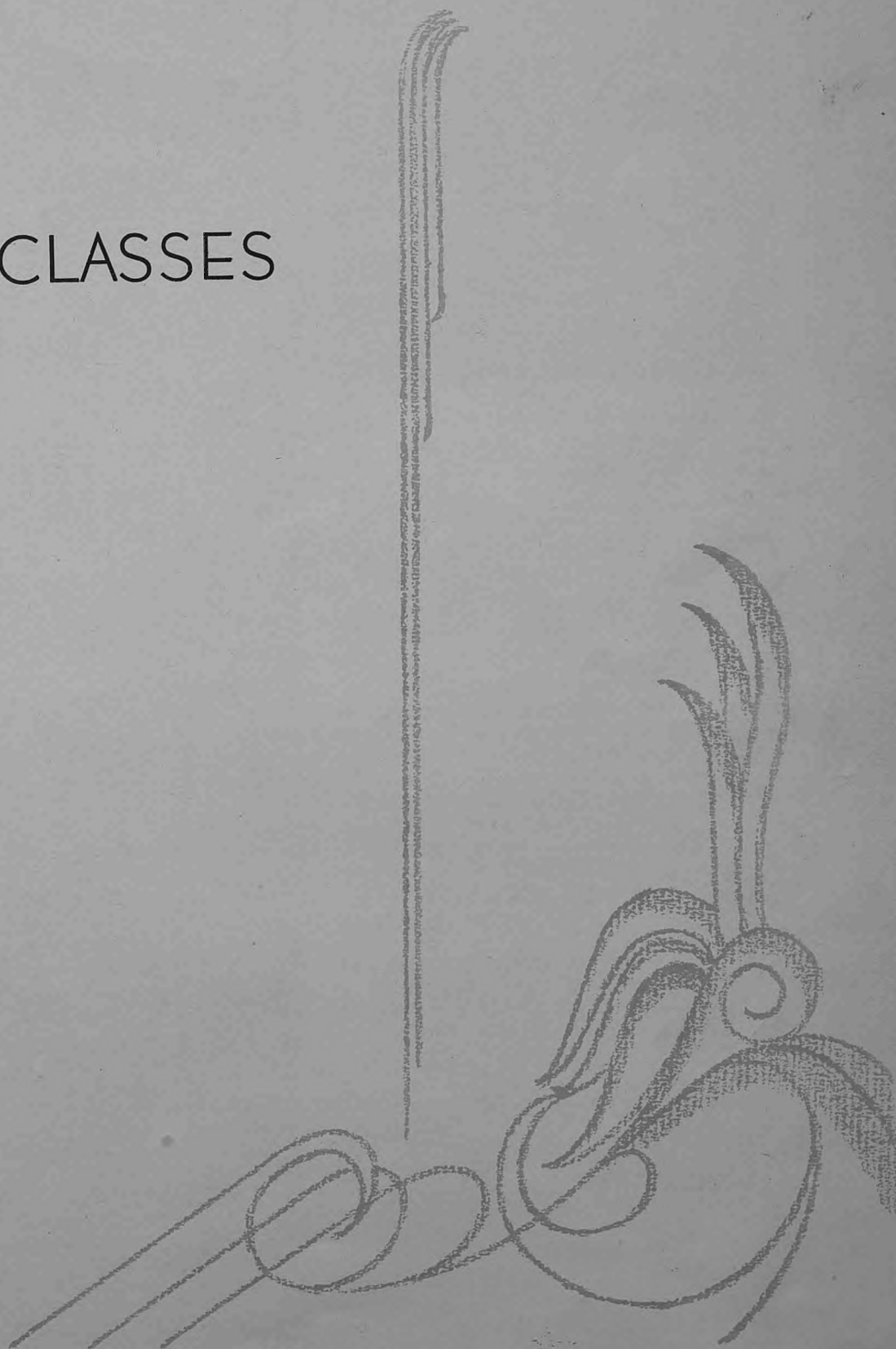


Marian Weeks, Arva Hansen, Wilma Simmonds, R. C. Merrill, Etta Millington.  
Faye Lewis, Nelda Van Orden, Rhonda Nelson, Marie Holjeson, Ferrin Holjeson.





# CLASSES







## Seniors



GRANT PETERSON

Junior Prom Committee 3; Home Ec. 2; C.L.L. 1; Senior  
Opera 4; Senior President 4; Vice-President 4.  
Student Council 4; Boosters 4.



VENNA MUNK



LAURA HOFFMAN

Home Ec. 2; Pep Vice-Presi-  
dent 3; Commercial Club 4;  
Junior Prom Committee 4;  
Secretary Seniors 4; Assembly  
Committee 4.



MR. WINN

We the Senior Class of '35 present ourselves at the threshold of a new era, with four happy years in the background.

Upon entering the portals of North Cache, opportunities began to present themselves to us, and we feel that we have made good use of them.

Our academic years have been filled with pleasant contacts for intellectual appreciations. We have learned that life presents each of us with complex social responsibilities, that each of us has learned more thoroughly to understand.

We have tried to contribute to the welfare of our school in all school activities. Our class athletes have been a potent factor in our school teams. Our class dramatists, singers, and debators have added much to the respective departments. The class as a whole has tried to level out the plane of social equality in all school parties.

The school tradition of learning, a gift of appreciation to our school, is being made by our class.

We have aimed this year to assist the graduation committee in a new scheme of commencement exercises, therefore, we must say these four years are well spent.



ROBERTA ROSKELLEY (Smithfield): Opera 2, 3; Home Ec. 2; C.L.L. 1.

FERRON NILSON (Smithfield): President of F.F.A. 4; Fire Chief of Boosters 4; Booster 2, 3, 4; Reporter of Hobby Club 4.

LULA CARTWRIGHT (Richmond): Pep 3; La Senia 4; Opera 4.



VELMA NIELSON (Lewiston): Home Ec. 1; C.L.L. 1; Opera 3.

SETH CHRISTENSEN (Richmond): Football 2, 3, 4.

THELMA PETERSON (Cornish): Home Ec. 4; Pep Club 3; President of LaSenia 4; Dramatic Club 4; School Play 3, 4; Norcachian 4; Junior Prom Committee 3; Vice-President of Juniors 3.



WENDELL ANDERSON (Cornish): Opera 2, 3; Track 4; C.L.L. 1.

ELVA ROUNDY (Benson): Home Ec. 2; Pep Club 3; Opera 2; Commercial Club President 4.

DON LITTLELIKE (Trenton): F.F.A. 1, 2, 3; F.F.A. Treasurer 3; Opera 2, 3, 4.



MARIAN WEEKS (Smithfield): La Senia 4; Commercial Club 4; Dramatic Club 4; Norcachian 4; Junior Prom Committee 3; Debating 2.

RAYMOND NELSON (Richmond): Football 2, 3, 4; F.F.A. 3; C.L.L. 1; Booster 3, 4.

JUNE BINGHAM (Cornish): C.L.L. 1.



MERLIN ANDREW (Trenton): Football; C.L.L. 1; Booster 4.

MARGARET BOWMAN (Lewiston): President Freshman Class 1; Pep Club 1; President Pep Club 3; Student Council 1; Home Ec. 1, 2; Student Body Song Leader 4; Tennis Club 4; Dramatic Club 4; La Senia Club 4; Opera 2, 3; C.L.L. 1; Polaris Committee 4.

DALLAS GOODEY (Clarkston): Football 3, 4; Booster 4; C.L.L. 1.



JANETTE RAWLINS (Lewiston): Home Ec. 1, 2; C.L.L. 1; Norcachian 4; Polaris 4.

BLAINE HANCEY (Hyde Park): School Play 4; Norcachian 4; C.L.L. 1.

LOUISE WAITE (Smithfield): Pep Club 2; Pep Cheer Leader 3; Home Ec. 2; C.L.L. 1; La Senia Cheer Leader 4; Dramatic Club 4; Opera 3; Norcachian 4; Secretary Sophomore Class 2.

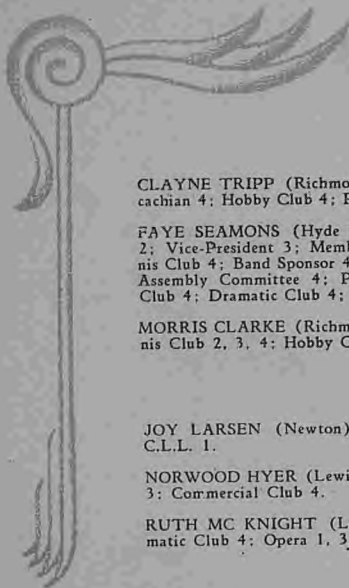


MELDON KARRER (Lewiston): Hobby Club 4.

MAXINE ALLEN (Smithfield): Home Ec. 4; Opera 3, 4; Norcachian 4; Pep Club 3; La Senia 4.

REUEL DOWDLE (Newton): C.L.L. 1; Commercial Club 4; Opera 2, 4.





CLAYNE TRIPP (Richmond): Football 4; Booster 4; Norcachian 4; Hobby Club 4; Polaris Committee 4; Basketball 4.

FAYE SEAMONS (Hyde Park): Home Ec. Club Secretary 2; Vice-President 3; Member Home Ec. 4; C.L.L. 1; Tennis Club 4; Band Sponsor 4; Norcachian 4; Polaris Editor 4; Assembly Committee 4; Polaris Committee 4; Commercial Club 4; Dramatic Club 4; Opera 1, 2, 3.

MORRIS CLARKE (Richmond): Basketball; C.L.L. 1; Tennis Club 2, 3, 4; Hobby Club 4.

JOY LARSEN (Newton): Home Ec. 1, 2; La Senia 4; C.L.L. 1.

NORWOOD HYER (Lewiston): C.L.L. 1; Booster 4; Opera 3; Commercial Club 4.

RUTH MC KNIGHT (Lewiston): Pep 3; C.L.L. 1; Dramatic Club 4; Opera 1, 3.

FRANKLIN DUCE (Hyde Park): Football 3, 4.

ELLEN HANCEY (Hyde Park): Home Ec. 2, 3, 4; C.L.L. 1; La Senia Vice-President 4.

PHILIP BERGESON (Lewiston): C.L.L. 1; Tennis Club 3, 4; Booster 3, 4; Dramatic Club 4; School Play 2, 4; Opera 4; Norcachian 4; Assembly Committee 3; Junior Prom Committee 3; Cheer Leader Student Body 3, 4; Polaris Committee 4.

NORMA PETERSON (Benson): Home Ec. Club 2; C.L.L. 1.

LYNN PITCHER (Smithfield): C.L.L. 1; Football 1, 2, 3, 4; Basketball 1, 2, 3, 4; Cross Country 1; Track 1, 2, 3, 4; Booster 3, 4; Polaris Committee 4; Polaris Business Manager 4.

FAYE LEWIS (Richmond): Girls' League President 4; Home Ec. 2, 3; Pep Club 1, 2, 3; C.L.L. 1; La Senia 4; Opera 2, 3, 4.

NIEL MCMURDIE (Richmond): C.L.L. 1; Hobby Club 4.

DAPHNA DUCE (Hyde Park): Home Ec. Club 1, 2, 4; C.L.L. 1; La Senia 4.

REUBEN RASMUSSEN (Clarkston): F.F.A. 2, 3; C.L.L. 1.

CLEDA LEAVITT (Lewiston): Home Ec. 1, 2; Pep Club 2, 3; La Senia 4; Opera 2, 3; C.L.L. 1.

LLOYD EGAN (Richmond): Football 3, 4; F.F.A. 1; Track 4; Cross Country 4.

ERMA JOHNSON (Lewiston): Home Ec. 1, 2, 3; C.L.L. 1; La Senia 4.

CECIL BODILY: F.F.A. 3; C.L.L. 1.

DELORES LEWIS (Richmond): Pep Club 1, 2, 3; C.L.L. 1.

DICK LEWIS (Lewiston): Athletic Manager 4; Booster 4.





CONLEY CHRISTENSEN (Clarkston): C.L.L. 1.

MABLE BRIGHT (Lewiston): Pep Club 1; C.L.L. 1.

NORMAN SCROWTHER (Smithfield): F.F.A. 1, 2; Hobby Club 4; Intramural Basketball 3, 4.

FAY HICKEN (Richmond): Home Ec. 2; C.L.L. 1; La-Senia 4; Dramatic Club 4.

LYMAN PERKES (Hyde Park): C.L.L. 1; Tennis 3, 4; Commercial Club 4; Opera 4; Track 4; Cross Country 4.

ELNORA TALBOT (Lewiston): Home Ec. 1; C.L.L. 1; Opera 4.

JOE MYLER (Cornish): Opera 2, 3, 4.

ISABEL BAIR (Richmond): Home Ec. 1, 2; C.L.L. 1.

MARK JENKINS (Newton): C.L.L. 1; Track 2, 3.

CHARLOTTE THAIN (Benson): Pep Club 3; Opera 3, 4.

RUSSELL PETERSON (Ama'ga): Cross Country 3, 4; C.L.L. 1; Opera 4; Hobby Club 4.

KATHRYN WAITE (Hyde Park): Home Ec. 1, 2, 4; La Senia Secretary and Treasurer 4; C.L.L. 1; Norcachian 4.

WENDELL MUNK (Benson): F.F.A. 2, 3, 4; C.L.L. 1.

MOZELLE WINN (Smithfield): La Senia 4; Opera 3; Norcachian 4; C.L.L. 1.

JEDDIE BINGHAM (Almaga): Opera 3; F.F.A. 1, 2; Hobby Club 4.

WILMA SIMMONDS (Cornish): C.L.L. 1; La Senia 4; Debating Club Secretary 4; Dramatic Club 4; Norcachian 4; Polaris 4; Debating 4.

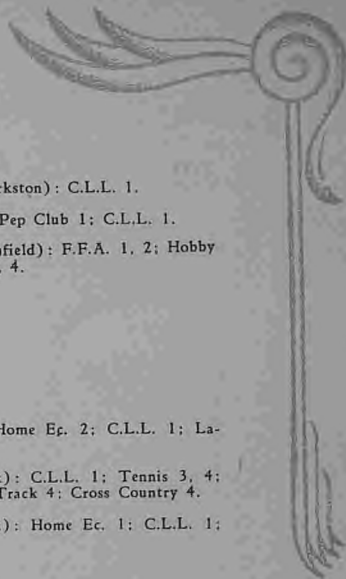
DON HILL (Richmond): F.F.A. 1, 2; C.L.L. 1.

LEAH HANCEY (Richmond): La Senia 4; Norcachian 4.

DEE GEARY (Smithfield): Basketball 2, 4; C.L.L. 1.

GWEN JOHNSON (Lewiston): Home Ec. 1, 2, 3; Home Ec. President 4; Freshman Vice-President 1; Pep Club 1, 2, 3; La-Senia 4; Opera 1, 2, 3, 4; Dramatic Club 4; School Play 4; Norcachian 4.

ARTHUR PRICE (Cornish): C.L.L. 1; Track 4.







ARDETH CRAGUN (Smithfield): Pep 3; Home Ec. 2; Opera 2, 3; C.L.L. 1.

RAYMOND LAWRENCE (Richmond): C.L.L. 1; Norcachian 4; Polaris 4; Track.

ALICE CHAMBERS (Smithfield): La Senia 4; C.L.L. 1.

DARWIN ALLSOP (Smithfield): Secretary and Treasurer Hobby Club 4.

FAYE ROSKELLY (Smithfield): C.L.L. 1; Dramatic Club Treasurer 4; Vice-President Sophomore Class 2; Norcachian 4.

GORDON COTTLE (Trenton): Football 1, 2, 3, 4; F.F.A. 2, 3, 4; C.L.L. 1; Booster 1, 2, 3; Secretary Boosters 4; Track 1, 2, 3, 4.

ELLA MAE BERGER (Benson): Home Ec. 2.

HOMER MC CARTY (Amalga): Commercial Club 4.

ARLIE BODILY (Lewiston): Home Ec. 1, 2.

BERT ORCHARD (Lewiston): C.L.L. 1; School Play 4; Secretary Dramatic Club 4.

THELMA HADFIELD (Smithfield): Home Ec. 2, 3; Opera 2, 3; C.L.L. 1.

DEAN SMITH (Richmond): Booster 3, 4; Hobby Club 4; Athletic Manager 3; F.F.A. 1, 2, 4.

DONNA DRAPER (Lewiston): C.L.L. 1; Home Ec. 1.

R. C. MERRILL (Richmond): Tennis Club 4; Debating 3, 4; Debating Club 4; Opera Orchestra 4; Editor of Norcachian 4.

RUTH POND (Lewiston): La Senia 4; Dramatic Club 4; School Play 4; Opera 4.

PHILIP BERNHISEL (Lewiston): Opera 1, 2, 3; F.F.A. 2, 3, 4.

ELEANOR SWENDSEN (Lewiston): Home Ec. 1, 2; Pep Club 2; C.L.L. 1; La Senia 4; Opera 2.

LEVI JORGENSEN (Hyde Park): School Play 4; F.F.A. 3, 4; Dramatic Club 4.

JEAN FULLER (Smithfield): Home Ec. 2; C.L.L. 1.

EPHRAIM FALSLEV (Benson): Boys' League Vice-President 4; Football 2, 3, 4; F.F.A. 1, 2, 3, 4; C.L.L. 1; Dramatic Club 4; Opera 1, 2, 3, 4; Track 4.

THAIL THOMPSON (Richmond): Pep Club 1, 2, 3; La Senia 4; Home Ec. 1, 2; C.L.L. 1; Opera 2; Secretary Freshman Class 1.



*William  
Merrill*



MERLIN WEBB (Richmond): F.F.A. 2, 3, 4; C.L.L. 1; Tennis Club 3.

FRANK PETERSON (Hyde Park): C.L.L. 1; Boosters 3, 4; Football 3; Class President 3; Student Body President 4; Student Council 3, 4; Junior Prom Committee 3.

MERLE KENT (Lewiston): F.F.A. 1, 2, 3, 4; C.L.L. 1; Opera 2; Hobby Club 4.

HELEN BERNØT (Trenton): Home Ec. Club 2; La Senia 4; Norcachian 4.

DAYLE HIGGENSON (Smithfield): Basketball 2; C.L.L. 1; Boosters Club 2, 3, 4; Dramatic Club 4; School Play 4; Opera 3, 4; Track 2, 4.

BARBARA BYBEE (Lewiston): Home Ec. Club 1, 2; Pep Club 2, 3; La Senia 4; Dramatic Club Vice-President 4; School Play 4; Opera 2, 4.

REED CUNNINGHAM (Lewiston).

EDNA HALGREEN (Cornish): C.L.L. 1; La Senia 4; Debating Club 4; Dramatic Club 4; Debating 3, 4.

PAUL THAIN (Benson): C.L.L. 1; Basketball 2.

THELMA TIDWELL (Smithfield): Home Ec. Club 2; C.L.L. 1; Opera 2.

ELDRIDGE ARCHIBALD (Clarkston): C.L.L. 1; Basketball 3, 4.

HAZEL HANCEY (Newton): Home Ec. Club 1; C.L.L. 1; La Senia 4.

ROBERT JONES (Smithfield): Commercial Club 4.

ARVA HANSEN (Smithfield): La Senia 4; Commercial Club 4; Norcachian 4.

HOWARD KENT (Lewiston): F.F.A. 1, 2, 3, 4; Boosters 4; Debating Club 4; Dramatic Club 4; Norcachian 4; Student Body Secretary 4; Debating 1, 2, 3, 4; Student Council 4.

IRIS CLARK (Richmond): Home Ec. Club 1, 2; C.L.L. 1; La Senia 4; Dramatic Club 4; Opera 1, 3; Norcachian 4; Debating 4; Pep Club 1.

VERL GODFREY (Clarkston): C.L.L. 1.

FLORENCE MCQUARRIE (Hyde Park): Home Ec. Club 3, 4; C.L.L. 1; La Senia 4.

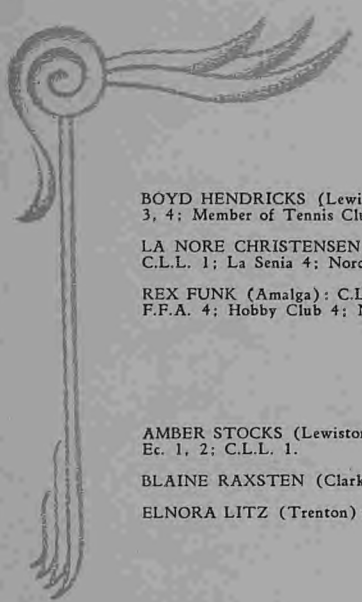
WILLIAM MENDENHALL (Richmond): F.F.A. 2, 3, 4; Boosters 3, 4; Cross Country 4; Vice-President of Hobby Club 4.

LAURA DAHLE (Clarkston): Home Ec. Club 4; Opera 2; C.L.L. 1.

SIDNEY HURREN: Football 2; Opera 3, 4; F.F.A. 2, 3, 4.

*William Mendenhall*





BOYD HENDRICKS (Lewiston): President of Tennis Club 3, 4; Member of Tennis Club 2; Booster 2, 3, 4.

LA NORE CHRISTENSEN (Newton): Home Ec. Club 1; C.L.L. 1; La Senia 4; Norcachian 4.

REX FUNK (Amalga): C.L.L. 1; F.F.A. 2, 3; Secretary of F.F.A. 4; Hobby Club 4; Norcachian 4.

AMBER STOCKS (Lewiston): La Senia 4; Opera 2; Home Ec. 1, 2; C.L.L. 1.

BLAINE RAXSTEN (Clarkston):

ELNORA LITZ (Trenton): C.L.L. 1; Pep 1; Home Ec. 2.

GEORGE TALBOT (Lewiston): F.F.A. 1, 2, 3; Hobby Club 4.

GWENVA CLARKE (Newton): Home Ec. 1; La Senia 4; Opera 1, 3; Senior Representative of Girls' League 4.

GLEN THORNLEY (Smithfield): C.L.L. 1.

MARY JONES PETERSON (Smithfield): Commercial Club 4; Norcachian 4.

VICTOR GODFREY (Clarkston): Basketball 1, 2; Opera 3.

RHONDA NELSON (Smithfield): Home Ec. 2; La Senia 4; Junior Prom Committee 3, 4; Student Council 4; Representative of Girls' League 2, 3; Norcachian 4; Student Body Vice-President 4; Dramatic Club 4; Assembly Committee 4.

LEO GODFREY (Clarkston): F.F.A. 3, 4.

NELDA VAN ORDEN (Lewiston): Home Ec. 1, 2; C.L.L. 1; Commercial Club 4; Dramatic Club 4; Norcachian 4.

VANCE RAVSTEN (Clarkston): C.L.L. 1.

ETTA MILLINGTON (Smithfield): La Senia 4; Commercial Club 4; Debating Club 4; Norcachian 4; Debating 3, 4.

REED JOHNSON (Richmond): Boosters 1, 2, 3, 4; President of Sophomores 2; Student Council 2; Boys' League Vice-President 3; Boys' League President 4; Opera 3, 4; Basketball 3; Captain of Basketball 4; Football 3; Captain Football 4; Track 3.

MYRTLE ATHAY (Smithfield): La Senia Cheer Leader 4; Opera 3; School Play 4; Norcachian 4; Dramatic Club 4.

LUCILLE HOBBS (Benson): C.L.L. 1.

ROBERT SEAMONS (Hyde Park): C.L.L. 1; Football 4.

BEATRICE BARKER (Newton): Girls' League Secretary 4; Junior Prom Committee 3; Secretary of Juniors 3.



DALE MUNK (Benson): F.F.A. 2, 3, 4.

EDGAR PITCHER (Smithfield): Football 1, 2; F.F.A. 1, 2; C.L.L. 1; School Play 4, 5; Norcathian 5; Radio Club 1.

WENDELL BAIR (Cove): C.L.L. 1; F.F.A. 3.

MURL RAWLINS (Lewiston): Cross Country 1; Track 2; Opera 4.

LOTHAIR GRANT (Hyde Park): C.L.L. 1.

FRANK MEIKLE (Smithfield): Booster 2, 3, 4; Cheer Leader Student Body 2, 3, 4.

O'NEIL SAINSBURY (Clarkston)

SHERMAN HORTIN: C.L.L. 1; F.F.A. 3, 4; Hobby Club 4.

FERRIN HOLJESON (Smithfield): C.L.L.

MARIAN CAINE (Richmond): La Senia; Home Ec. 2, 3, 4; Pep 2, 3.







## Juniors



HOWARD FRANDSEN  
*President*



DELVA DAINES  
*Vice-President*



ERMA BAMBROUGH  
*Secretary*



GRACE S. HAWKS  
*Adviser*



ELLIS DOTY  
*Adviser*

"It's a good thing we have Juniors in our schools. They are something for the Sophomores to become and someone for the Seniors to lay their burdens upon at commencement time."

This statement suits the Junior Class of '35, for we feel our example has been fine enough for the Sophomores to follow, and that our ability and courage are worthy of any Senior responsibility.

Every field of activity in our school this year has been dotted with Junior participants. The ranks of the athletics, debating, dramatics, commercial work, school publications, school officers, and scholastic competition have been filled with our classmates.

To our officers and faculty advisers we express our sincere thanks, for it is they who have kept our happy band marching during this school year.

# Juniors



Wayne Purser, Grace Bair, Farrel Bybee, Beth Rogers, Jay Bingham, Reba Griffiths, Landon Rich.  
Afton Lowe, Paul Nelson, Afton Merrill, Ferris Peterson, June West, Wendell Hurren, Lois Sorenson.  
Roland Mather, Afton C. Merrill, Kenneth Hortin, Lorna Nielson, Lewis Smith, Gwen Balls, Glen Nelson.  
Afton Watson, Leland Bateman, Arlene Hodges, Cecil Hendricks, Emelia Hansen, Gerald Butler, Leora Karren.  
LeRoy Saunders, Grace Mendenhall, George Stuart, Eva Simmonds, Keith Mortensen, Hazel Kirby, Blaine Smith.  
Nettie Stuart, Harold Carlson, June Burgess, Doug Harris, Lois Hendricks, Burns Toolsen, Elaine Poulson.



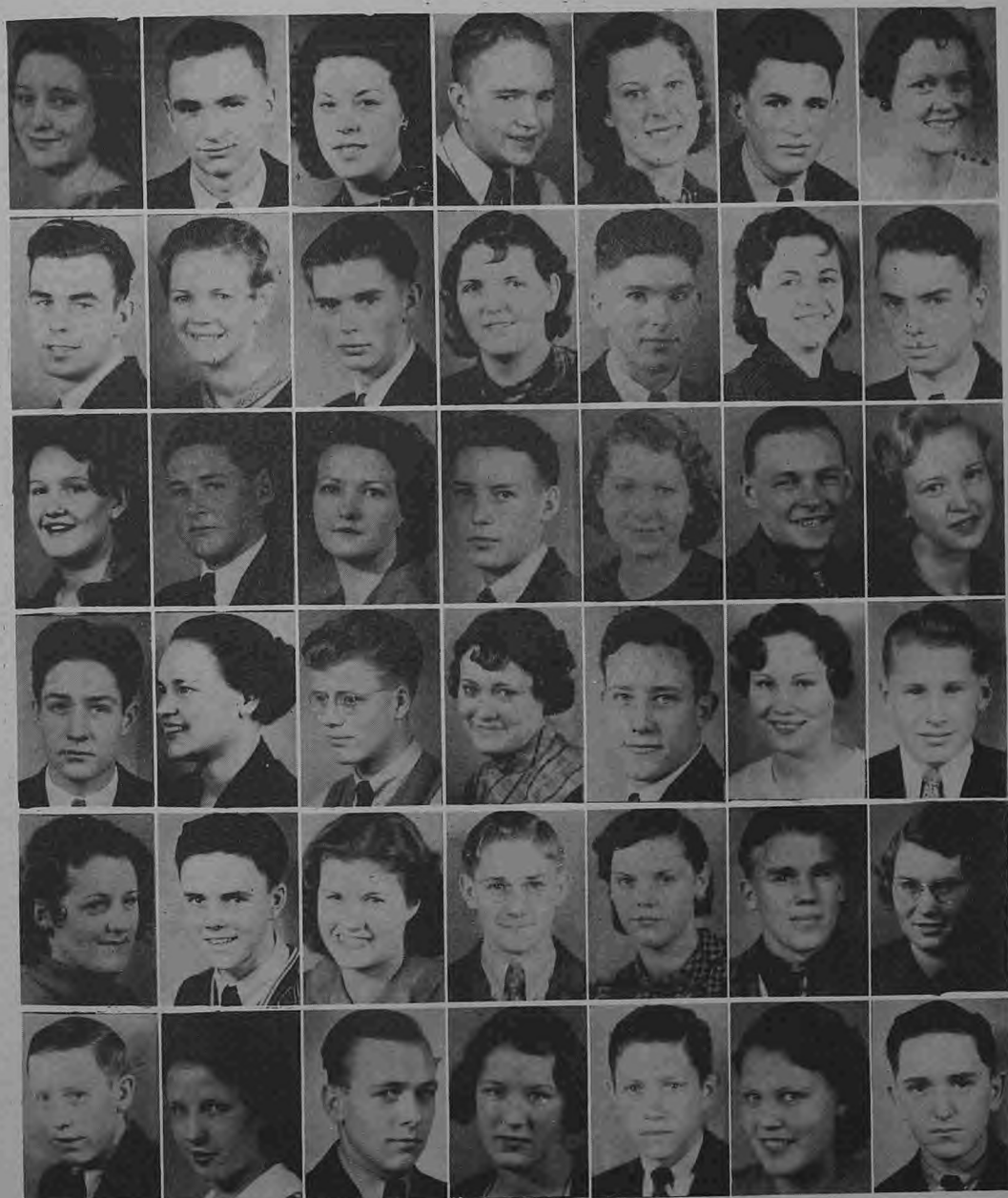
## Juniors



George Smith, Elva Cottle, Irwin Stoddard, Ila Westover, Afton Orchard, Bethea Day, Richard Nelson.  
 Gayle Hansen, Frell Blair, Erma Hansen, Marion Larsen, Sadie Godfrey, Doyle Howell, Gwen White.  
 Arthur Bybee, Phyllis Allred, Clyde Hendricks, Helen Seamons, Donald Anderson, Agnes Hansen, Lowell Jenkins.  
 Ellen Peterson, David Christensen, Anna Seamons, Melvin Jonas, Ruth South, Wayne Traveller, Marian Jensen.  
 Cye Napper, Phyllis Nelson, Myron Seamons, De Lone Nilson, Vincent Buttars, Mary Lou Hendricks, Hal Pitcher.  
 Delta Haslam, DeMar Scrowther, Sabina Bodily, Keith Wood, Thelma Hind, Grant Griffin, Marguerite Phillips.



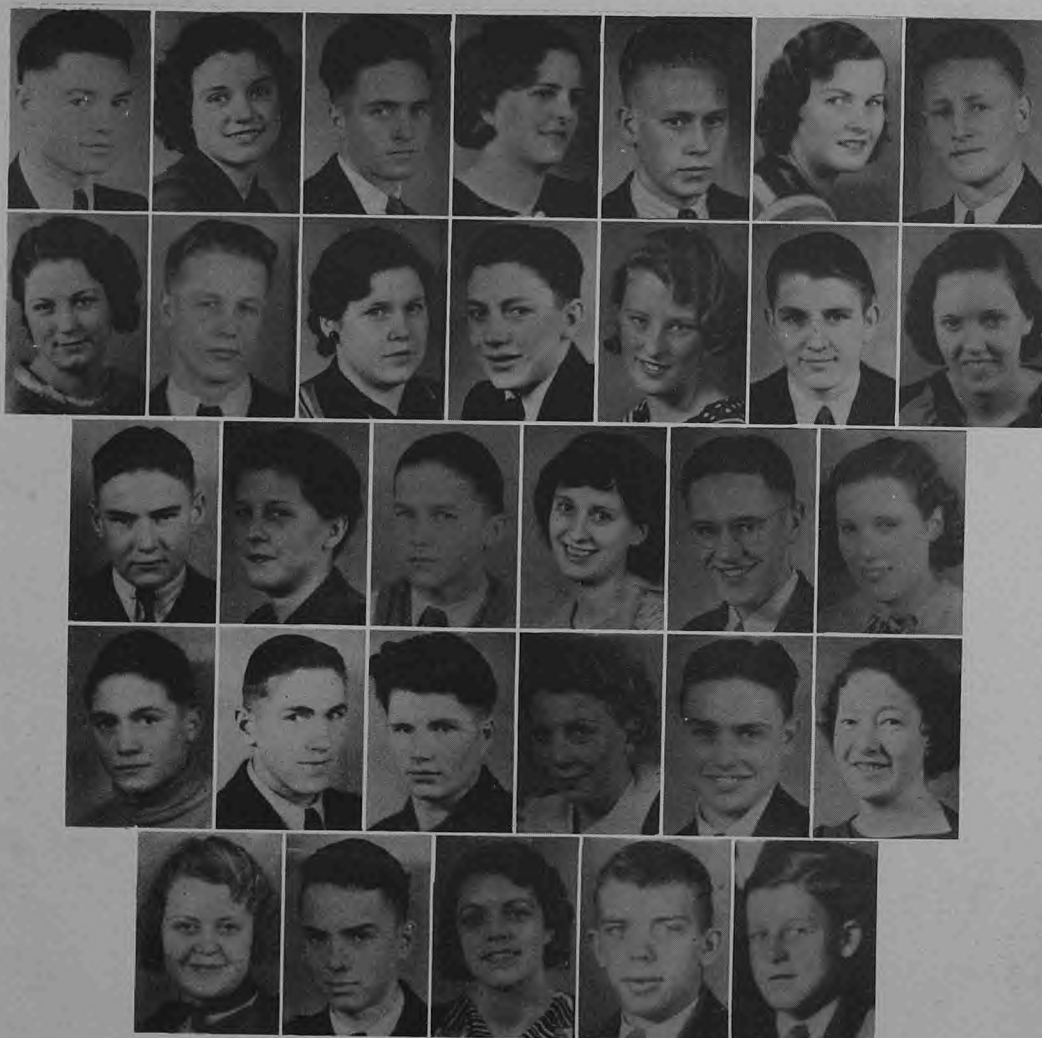
# Juniors



Bonnie Sandburg, Glen Nelson, Iris Baker, Budd Griffiths, Virginia Burgess, Victor Cartwright, Flossie Butters.  
 Donald Blanchard, Al Dean Hendricks, Marion Larsen, Connie Anderson, Ray Van Orden, Mary Sorenson, Randall Hillyard.  
 Ardith Robinson, Philip Bernhisel, Elva Fullmer, Reed Woodland, Elaine Christofferson, Eldon Rasmussen, Beth Jorgensen.  
 McKay Marler, Doris Pond, Rosalind Eppich, Barbara Jardine, Leon Smith, Beth Merrill, Sidney Johnson.  
 Barbara Merrill, Owen Hillyard, LaRena Benson, La Van Hendricks, Sybil Thompson, Leon Larson, Jennie Ravsten.  
 Dean Jenkins, Reba Bair, Robert McCann, Frances Bernhisel, Bud Bingham, Vaudis Neilson, Paul Stocks.



## Juniors



Nolan Ballard, Anna Rye Bingham, Terrance Hatch, Ruby Johnson, Darrell Mickelson, La Rene Dahle, Delmont Larsen.

Elaine Johnson, Theodore Aston, Geneva Seamons, Fred Jensen, Marjorie Merrill, Norvel Bailly, Evelyn Smith.

Dick Harris, Nedra Stephenson, Leon Halgren, Dorothy Tuttle, Howard Ririe, Glenda Blair.

David Gancheff, Fred Veibell, Curtis Peterson, Eunice Johnson, Ottis Plant, Grace Kernes.

Carma Hansen, Randall Hillyard, Bertha Pitcher, Dean Nelson, Kerth Lewis.

# Sophomores



DARRELL PITCHER  
*President*

LOIS FRANDSEN  
*Vice-President*

MARGERY HANCEY  
*Secretary*

ALFRIEDA OLSON  
*Adviser*

The leaders of our Sophomore class are: Darrell Pitcher, president; Lois Frandsen, vice-president; Marjorie Hancey, secretary and treasurer; Miss Alfrieda Olsen, class adviser.

As this eventful year draws to a close, we take ourselves in hand, to analyze all of our activities. Our successes have encouraged us while our failures have spurred up on to renewed efforts for succeeding years. We are thankful that we have had the great privilege of attending such a splendid institution.

Next year we are returning as the "exalted" Juniors, and we aim to put our hearts, minds and souls into the aspiration of "carrying on."



Venna Egbert, Ralph Duce, Ortel Christensen, Richard Daines, Cleo Christensen, Acel Buttars, Gladys Berger, Maxine Balls, Joe Allen, Ida Monroe, Wendell Buttars, Irene Andrew, Afton Barker, Grant Atkinson, Cora Boman, Quentin Peart.





## Sophomores



Harold Gutke, Cleone Gunnell, Llewelyn Gittens, Jenness Fulkerson, Bowers Forrestor, Delva Ewing, Lowell Griffiths.

Helen Erickson, Gerald Gyllenskog, Irene Hobbs, Douglas Hendricks, Barbara Eiwood, Sidney Kent, Ada Johnson.

Edwin Jardine, Ruby Johnson, Lear Jorgenson, Violet Johnson, Irwa Jardine, Hulda Izatt, Howard McGee.

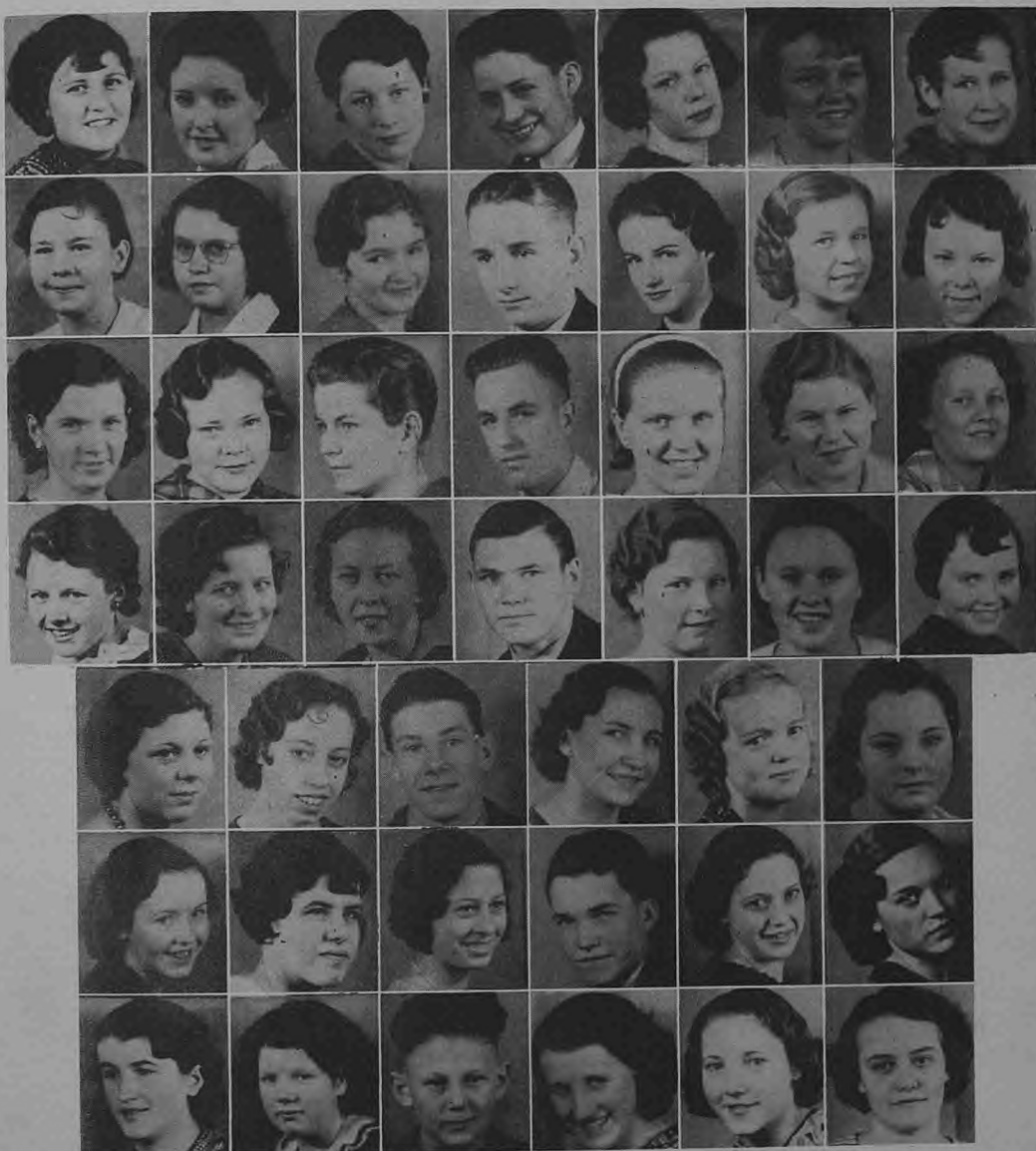
Armina Jonas, Minard Jarvis, Kathryn Harris, Earl Hancey, Bonnie Munk, Sterling Nelson, Laura Mack.

Vyrle Allen, James Last, Alta Dean Haglund, Cecil Kent, Orris Mae Allen, Glen Larsen.

John Cannel, Connie Hurren, Don Meikle, Marigene Lamb, Alva Bowman, Alice Aston.

Helen Miles, Wendell Boman, Glenda Bingham, Ronald Buttars, June Bergeson, Kenneth Ballard.

# Sophomores



Mary Wheeler, Maxine Balls, Theda Bair, Earl Wennergren, Frances Rawlins, Dora Christensen, Lilly Saunders,  
 Aletha Reeder, Stella Bright, Maxine Eskelson, Otto Porter, Maxine Peterson, Phyllis Reeder, Mary Traveller.  
 Melba Maisey, Beth Plowman, Joy Roskelley, Dean Rich, Irene Olsen, Anna Veibell, Lois Reeder.  
 Bernice Young, Aileen Williamson, Mildred Ashcroft, Leland Ricks, Blanche Bingham, Cleone Tripp, Nada Cardon.  
 Marguerite Hendricks, Dora Peterson, Jack Milligan, Mariam Phillips, Alice Simmonds, Mae Greger.  
 Avon Hyde, Beth Nelson, Afton McMurdie, Gordon Webb, Celia Balls, Letha Peterson.  
 Bernell Winn, LaRue Westover, Kay Waite, Evelyn West, Lois Ravsten, Betty Cardon.



## Sophomores



Jack Thompson, Dona Winn, Dorothy Pitcher, Melba Christensen, Lyle Saxon, Ella Hall, Elmer Olsen.  
 Verl Webb, Max Bergenson, Marie Johnson, Dorothy Spackman, Donald Williams, Enid Smith, Lynn Richards.  
 Elsie Godfrey, Kenneth Thornley, Wanda Corbett, Dean Spackman, Thelma Wheeler, La Mar Spackman, Glade Nelson.  
 Keith Roskelly, Nelda Van Dyke, La Rae Crockett, Mariett Tarbett, Kenneth Turner, Brenda Van Orden, Lee Waite.  
 Bernice Seamons, Melvin Van Noy, Marie Aller, Paul Taggart, Myrtle Turner, Thelma Shepherd.  
 Wendell Preece, Ross Talbot, Marie Sparrow, Arlene Griffin, LaVon Smith.



# Freshmen



Dee Van Orden, president; Beth Bambrough, vice-president; Leone Hendricks, secretary; Frances Vernon, adviser.

If the future structure of any high school is to be strong, each succeeding year of Freshmen must prove capable. We have sensed, and we feel, have fulfilled the purpose of our Freshman year, which is to initiate us into the intellectual and social structure of our school. Following this initiation, we expect to become as Sophomores, full fledged members of the organization, and eventually as Seniors, the leaders. Seniors never become Seniors without first serving in the role of Freshmen. Therefore, we feel that the Freshman year, as it offers a period of unequalled expansion, and a promise of three more years of growth, is the best in the school. Three cheers for the "Freshies"!



Dale Van Orden, Marilyn Cottle, Carrie McQuarrie, Gerald Hendricks, Elda Hansen, Kiyo Iwamoto, Boyd Karren, Ethel Waite.

Mary Haslem, Arlene Allen, Glen Maisey, Margaret Anderson, Peggy Parkinson, Bert Litz.

Eldon Webb, Sybil Christensen, Vonda Nelson, Verden Talbot, Vera Griffin.



## Freshmen



La Gene Harris, Norman Andrew, Faye McCulloch, Athalie Howell, Verden Bowman, Cleah Telford, Lyle Cooley, Naomi Godfrey, Lois Butters, Julia Griffin, Mack Stoddard, Shirley Mae Anderson, Kathleen Grant, Sam Bailey, Ven Myler, Thelma King, Norman Morrison, Donna Sorenson, Bertha Monson, Lowell Lewis, Mary Rawlins, Marie Jenkins, Jed Robinson, Grace Hill, Virginia Rassmenson, Max Lower, Dora Godfrey, Cleo Bert, Douglas McQuarrie, Nedra Jackson, Barbara South, Mervin Peterson, Althea Rawlins, Lorraine Harris, Lee Wheeler, Helen Spackmen, Roma Steed, Paul Ricks, Leah McCulloch, Marcell Pitcher, Douglas Clark, Constance Webb, Geneva Ellerman, Clair Karren, Geneal Duce, Herman Carlson, Edris Allen, Hazel Atkinson, Rex Pond, Garold Hyer, Ethel Woodland, Preston Johnson, Alice Harris, Vernon Peterson, Gay Tripp, Dale Rigby, Thelma Pearson, Kathryn Tubbs, Samuel Merrill, Louise Hyer, Delores Butters, Ray Nelson, Jene Carlson, Nona Crookston, Warren Rasssmen, Margaret Bernhisel, Afton Christofferson, Grant Tubbs, Myrtle Dahle, Janice Bullen, Rachel Bingham, Lindsay Rawlins.

# SOCIALS and ACTIVITIES







## Girls' League



FAYE LEWIS  
*President*



BEATRICE BARKER  
*Vice-President*



ALDEAN HENDRICKS  
*Secretary*



WYNONA HANSEN  
*Adviser*

The purpose of the Girls' League is to promote better fellowship among the girls in the school.

Each year the girls take a certain subject to study, which will cultivate better womanhood. This year "Personality" was the subject studied.

Every year there is a Girls' League Day on which the parents are invited to come and see the work done by all of the girls during the year. In the evening a dance is sponsored by the girls.

## Boys' League



REED JOHNSON  
*President*



EPHRAIM FALSLEV  
*Vice-President*



HAROLD CARLSON  
*Secretary*



GLENN R. WINN  
*Adviser*

The purpose of this organization is to create a sense of unity and fellowship; to discuss all problems pertaining to boy; to promote and conduct an intramural program; to promote and maintain high school standards, and to maintain good government in the school by fostering the civic virtues of self control, courtesy, cooperation and obedience to lawful authority.

## Home Economics Club



Back Row, left to right: Marilyn Cottle, Avon Hyde, Bonnie Munk, Marigene Lamb, Ortel Christensen, Veryl Webb, Kathryn Waite, Daphna Duce.

Center Row: Afton C. Merrill, Marjorie Hancey, Theda Bair, Laura Dahle, Joy Roskelly, Orris Mae Allen, Doris Pond.

Front Row: Faye Seamons, Mrs. Grace S. Hawkes, adviser; Elaine Christoffersen, secretary; Gwen Johnson, president; June Bergenson, vice-president; Florence McQuarrie, activity leader; Maxine Allen, Thelma Petersen.

## La Senia Club



Back Row, left to right: Iris Clark, Gwenva Clark, Joy Larsen, Leah Hancey.

Second Row: Amber Stocks, Etta Millington, Helen Brendt, Edna Halgren, Faye Lewis, Faye Seamons.

Third Row: Elenor Swendsen, Alice Chambers, Rhonda Nelson, Marie Holjeson, Daphna Duce, Margaret Bowman, Ruth Pond.

Fourth Row: Wilma Simmonds, Arva Hansen, Marian Weeks, Hazel Hancey, Lenore Christensen, Cleda Leavitt, Erma Johnson, Miss Pederson, adviser.

Front Row: Fay Hicken, Gwen Johnson, Maxine Allen, Barbara Bybee, Kathryn Waite, secretary and treasurer; Ellen Hancey, vice-president; Thelma Petersen, president; Louise Waite, cheer leader.



## Boosters' Club



Back Row, left to right: Lynn Pitcher, Howard Ririe, Raymond Nelson, Meldon Karren, Melvin Jones, Robert McCann, Edgar Hyer, Merlin Andrew, George Stuart, Harry Miles, Harold Carlson, Wayne Traveller, Victor Cartwright, Jed Robinson, Reed Woodland, Grant Peterson, Dean Smith, Gordon Webb.

Middle Row: Coach Heber Whiting, adviser: Howard Kent, Dallas Goodey, Darrell Pitcher, Dick Lewis, Ferron Nilson, Frank Peterson, Norwood Hyer, Clayne Tripp, Dale Higginson, Ottis Plant, president; Leon Smith, vice-president; Gordon Cottle, secretary; Reed Johnson, Clyde Hendricks, Ted Aston, William Mendenhall, Sidney Priday, Douglas Harris, Richard Harris, G. Ellis Doty, assistant adviser.

Bottom Row: Philip Bergeson, Irwin Stoddard, Paul Nelson, Don Meikle, Howard Frandsen, Dee Van Orden, Harold Gutke, Myron Seamons, La Van Hendricks, Stirling Nelson, Hal Pitcher, Cye Napper, Frank Meikle.

Members not on picture: Norland Brown, Boyd Hendricks.

The Booster Club of the North Cache High School serves as a symbol which stands for higher standards of relationship among members and toward all school activities.

To become a member of this club the candidate must receive the unanimous vote of the active members of the club; after which the candidate must qualify during an initiation period and must swear his allegiance to the school and the club.



# Pep Club



Back Row, left to right: Venna Egbert, Afton Barker, Jenness Fulkerson, Delva Daines, Enid Smith, Mary Haslam, Alice Simmonds, Afton C. Merrill, Thelma Shepard, Bethea Day, Connie Anderson, Beth Rogers, Lois Hendricks, Glenda Bingham, Vera Griffin, Delva Ewing, Mariett Tarbet, Helea Miles, Evelyn Smith, Nelda Van Dyke, June Burgess, Lois Frandsen.

Second Row: Lois Reeder, Oreta Rigby, Bertha Pitcher, Cecilia Balls, Frances Rawlins, Reba Bair, Leora Karren, Grace Mendenhall, Ellen Peterson, Arlene Griffin, Connie Hurren, Virginia Burgess, Anna Veibell, Cleone Gunnell, Bernice Young, Aletha Redder, Mary Sorensen, Margurite Phyllips, Elaine Christofferson, Geneva Seamons, Aldean Hendricks, La Rena Benson, Arlene Hodges.

Third Row: Iris Baker, Erma Bambrough, Anna Rye Bingham, Laura Mack, Beth Plowman, Brenda Van Orden, Mary Traveller, Grace Bair, Glenda Blair, Nedra Stephenson, Edris Allen, Margaret Anderson, Connie Webb, Nada Cardon, Ethel Woodland, Veryl Webb.

Ortel Christensen, secretary and treasurer; Cora Bowman, vice-president; Eva Simmonds, president; Arta Larsen adviser.

The Pep Club of North Cache High School serves as a stimulant, creating spirit in all school activities. The objectives of this club are: To establish a more desirable friendship, to develop courtesy, cooperation, obedience, and self-control within the membership of the organization.

## Commercial Club



Back Row, left to right: Theda Bair, Ada Thomas, Jay Bingham, Reuel Dowdle, Budd Griffiths, Burns Toolson, Glen Nelson, Verl Funk, Edgar Hyer, Lyman Perkes, Val Rigby, Dee Van Orden, Bernell Winn, Celia Balls.

Middle Row: Faye Seamons, Afton Barker, Erma Bambrough, Iris Baker, Vervyle Allen, Barbara Merrill, Grace Kent, Reba Bair, Janice Bullen, Afton C. Merrill, Etta Millington, Mary Jones Petersen, Arva Hansen, Iris Hansen, Nelda Van Orden, Connie Hurren, Laura Hoffman, Frances Bernhisel, LaRae Crockett, Anna Veibell, Melba Maisey, Roma Steed, Ellen Petersen, Evelyn West, Mariam Phillips, Dora Peterson, Anna Seamons.

First Row: Kyio Iwamoto, Helen Miles, Brenda Van Orden, Mary Rawlins, Laura Mack, Delva Ewing, Jenness Fulkerson, secretary; La Van Hendricks, vice-president; Elva Roundy, president; Gertrude Bentley, adviser; Edna Pedersen, Elsie Lewis, Ina Doty, Maxine Ball, Peggy Parkinson, Verl Webb.

Not present when picture was taken: Norwood Hyer, Arlene Allen, Alice Aston, LaRena Benson, Genevieve Bright, Bob Jones, McKay Marler, Homer McCarty, Frances Rawlins, Marie Sparrow, Cleah Telford, Marian Weeks.

The Commercial Club was organized January, 1935. The purpose of the club is to encourage commercial activities and participation in commercial work, to obtain higher scholastic standards in the commercial field and to increase the efficiency of the commercial department.

A council, consisting of the president, vice-president, secretary and treasurer and a club adviser constitutes the administrative body of the club.

## Dramatics Club



Back Row, left to right: Cecil Hendricks, Burns Toolson, Dale Higgenson, Leon Smith, Ephraim Falslev, AlDean Hendricks.

Second Row: Nada Cardon, Bernice Young, Helen Miles, Brenda Van Orden, Val Bullen, Myrtle Athay, Lynn Feltman, Lois Hendricks.

Third Row: Bernell Winn, Iris Clarke, Howard Kent, Philip Bergeson, Lynn Richards, Mary Lou Hendricks, Faye Seamons, Farrel Bybee.

Fourth Row: Florence McQuarrie, Lois Sorenson, Nelda Van Orden, Beth Rogers, Velma Orchard, Frances Rawlins, Oreta Rigby, Eva Simmonds, Eleanor Swendsen, Doris Pond.

Front Row: Faye Hicken, Edna Halgren, Wilma Simmonds, Rhonda Nelson, Marian Weeks, Mrs. Grace S. Hawks, adviser; Leon Halgren, president; Barbara Bybee, Faye Roskelley, secretary; Thelma Peterson, Gwen Johnson.

## Hobby Club



Back Row, left to right: Sherman Hortin, Ferron Nilson, George Talbot, Merle Kent, Norman Scrowthers, Clayne Tripp, Morris Clark, Neil McMurdie, Mural Lewis, Donald Blanchard, Rex Funk.

Front Row, left to right: Meldon Karren, Russell Petersen, Darwin Allsop, secretary and treasurer; Wm. Mendenhall, vice-president; Theron Barker, president; Mr. H. M. Wadsworth, adviser; Ray Van Orden, Dean Smith.





## Tennis Club



Back Row, left to right: Mr. Johnson, adviser; R. C. Merrill, Morris Clarke, Ottis Plant, Philip Bergeson, Dean Hicken, Steve Smith, Wendell Boman, Dee Van Orden.

Front Row: Faye Seamons, Doris Pond, secretary and treasurer; Lois Hendricks, Mary Lou Hendricks, president; Dick Nelson, Reed Woodland, La Van Hendricks, Lois Frandsen, Margaret Bowman, G. E. Doty.

George Stuart, vice-president, was absent when picture was taken.

Insert, Boyd Hendricks, former president, deceased.

## Debating Club



Back Row, left to right: Lyle Cooley, Preston Johnson, Leon Halgren, Bud Griffiths, Samuel Merrill, R. C. Merrill, Clark Griffin, Mary Lou Hendricks, Elmer Olsen.

Second Row: Maxine Ball, Marguerite Phillips, Irene Olsen, Nelda Van Dyke, Bernell Winn, David Gancheff.

Third Row: Edna Halgren, Etta Millington, Howard Kent, Farrell Bybee, Howard Frandsen, Arlene Griffin, LaVan Hendricks.

Front Row: Nada Cardon, Brenda Van Orden, Donna Winn, Lois Frandsen, June Burgess, Wilma Simmonds, secretary; Cleo Christensen, vice-president; Jack Milligan, president; Glenn R. Winn, adviser.

# Future Farmers



Back Row, left to right: Steven Smith, Sidney Kent, Sidney Hurren, Philip Bernhisel, Donald Blanchard, Val Bullen, Gordon Cottle, Ephraim Falslev, Rudger Dent, Sherman Hortin, Merle Kent, Clyde Humpheys, Ervin Merrill, William Mendenhall, Arthur Van Orden.

Third Row: Verdun Boman, Wendell Preece, Wendell Boman, Dean Spackman, Dale Munk, Alva Boman, LaMar Spackman, Terrence Hatch, Dean Smith, Grant Griffin, Leo Godfrey, Gerald Hyer, Lennis Chambers, Lindsay Rawlins, Wesley Downs, Lesley Downs, Brent Hortin.

Second Row: Amos W. Bair, adviser; Glen Larsen, David Sparks, Wayne Purser, Merlin Webb, Reed Woodland, Lowell Jenkins, Wendell Hurren, Quentin Peart, Bowers Forrester; Gordon Erickson.

Front Row: Scott Hendricks, Howard Kent, reporter; Farrel Bybee, watchdog; Sidney Priday, reporter; William Harper, treasurer; Ferron Nilson, president; Cecil Kent, R. L. Wheeler.

Absent: Rex Funk, secretary; Delmont Larson, vice-president; Theron Barker, Walter Gordon, Edis Hill, Wendell Munk, Harold Spackman.

The purposes of the Future Farmer organization are:

1. To promote vocational agriculture in the high schools.
2. To create more interest in the intelligent choice of farming occupations.
3. To create a nurture of love of country life.
4. To provide recreational and educational entertainment.
5. To promote thrift by membership through the establishment of saving accounts.
6. To afford a medium of cooperative buying and selling.
7. To establish the confidence of the farm boy in himself and his work.
8. To promote scholarship.
9. And to develop local leadership.



## School Debaters



Back Row, left to right: Glenn R. Winn, Edna Peterson, coaches.

Second Row: Etta Millington, Mary Lou Hendricks, Edna Halgren, Jack Milligan, Leon Halgren, LaVan Hendricks.

Front Row: Maxine Ball, Irene Olsen, Nelda Van Dyke, Elmer Olsen.

## Stock Judging Team



Back Row, left to right: Farrel Bybee, Delmont Larsen, Ferrin Neilson, Sidney Priday, Jeddie Bingham, Rex Funk.

Front Row: Wayne Purser, Mr. Bair, coach; Dean Smith.



# "Once In a Lifetime"



GRACE STARR HAWKES, *Director*

## CAST

Jeff Ross (Proprietor of the Service Station)	Farrel Bybee
Emily, his wife	Ruth Pond
Konrad, their adopted son	Philip Bergeson
Laurie York, niece of Mrs. Rose	Thelma Peterson
Rodney, a town character	Bert Orchard
Stella, a domestic	Myrtle Athey
Halsted Dinsmore, and author	Eddie Pitcher
The Daya, of the Gypsy Tribe	Doris Pond
The Daro, of the Gypsy tribe	Levi Jorgenson
Zara, eldest daughter of Daya and Daro	Mary Lou Hendricks
Katinka and Carmena, her sisters	Barbara Bybee
	Gwen Johnson
Stan, Zara's Sweetheart	Dale Higginson
Boy	Leon Halgren

## STAGE CREW

Murel Lewis, Arthur Bybee, Reed Johnson, Seth Christensen,  
Frank Meikle

## MUSIC

Lula Cartwright, Iris Clark, Leah Hancey, Howard Frandsen

"Once in a Lifetime" by Charles Quimly Brudette was our school play this year. (A romantic comedy of gypsy life—Mary Lou, Thelma, and Philip furnished the romance, and Myrtle, Bert, and Farrel, the comedy.) The rest of the cast was just what we needed to complete every detail.



RHONDA NELSON



FRANK PETERSON

## Most Popular Students

A popularity contest for the purpose of stimulating interest in this edition of the *Polaris* was one of the features of the subscription campaign. Mr. Luthur Smith, photographer, volunteered to furnish photographs of the candidates selected, free of charge.

It was the judgment of the staff that the twelve most popular girls and boys in school were Erma Bambrough, Nada Cardon, Rhonda Nelson, Faye Roskelley, Thelma Peterson, Melba Christensen, Dick Lewis, Howard Kent, Philip Bergeson, Sidney Priday, Grant Peterson, Frank Peterson. From these candidates, Rhonda Nelson and Frank Peterson were selected by a vote of the entire Student Body as the most popular girl and boy at North Cache.

# Journalism Class



R. C. MERRILL  
*Editor*

BLAINE HANCEY  
*Business Manager*

W. W. PERKINS  
*Faculty Adviser*



Back Row, left to right: W. W. Perkins, adviser; Louise Waite, Thelma Peterson, Howard Kent, Sidney Priday, Norland Brown, Raymond Lawrence, Edgar Pitcher, Rex Funk, Lynn Pitcher.

Middle Row, left to right: Iris Clar, typist; Myrtle Athay, Mozelle Winn, Maxine Allen, Gwen Johnson, typist; Faye Roskelly, Kathryn Waite, Helen Brendt, Edna Halgren, Marie Holjeson, circulation manager; Faye Seamons, La Nore Christenson.

Front Row, left to right: R. C. Merrill, editor; Arva Hansen and Marian Weeks, assistant editors; Blaine Hancey, business manager; Janette Rawlins, assistant business manager; Clayne Tripp, sports editor; Wilma Simmonds, social editor; Leah Hancey, feature editor; Nelda Van Orden, department editor; Philip Bergeson, assistant sports editor; Etta Millington, exchange editor.





## Polaris Staff



FAYE SEAMONS  
*Editor*



LYNN PITCHER  
*Business Manager*



GERTRUDE BENTLEY



W. W. PERKINS



E. M. VAN ORDEN



Raymond Lawrence, Beth Rogers, assistant editors; Wilma Simmonds, George Stuart, assistant business managers.  
Janette Rawlins, Senior editor; Margaret Bowman, Afton C. Merrill, typists.

## "South In Sonora"



OPERA PRINCIPALS

All who saw the opera "South in Sonora" will readily agree that it was one of the most outstanding operas ever produced at North Cache. Under the capable direction of J. W. Pulsipher, music director, every part was finished to a fine degree of perfection.

Much credit should be given the chorus who worked faithfully and diligently, and who so skillfully portrayed their parts—those of happy Mexican men and maidens. The characters were well chosen and well portrayed.

Ephraim Falslev, as a young American mining engineer, and Maxine Allen, as a beautiful Mexican girl were very outstanding in the leading roles. Other leads were sung by Ruth Pond, Beth Merrill, Lewis Smith, Don Littledike, Dale Higginson, Doris Pond, Ada Thomas, and Leon Smith. All of these students did excellent work and displayed beautiful, well-trained voices.



MR. J. W. PULSIPHER  
*Director*

The music was beautiful, the plot was cleverly worked out and very well arranged. The costumes and stage setting was very attractive. Every performance was received with enthusiastic applause by large audiences. The public will long remember the beautiful production "South in Sonora."



OPERA CHORUS



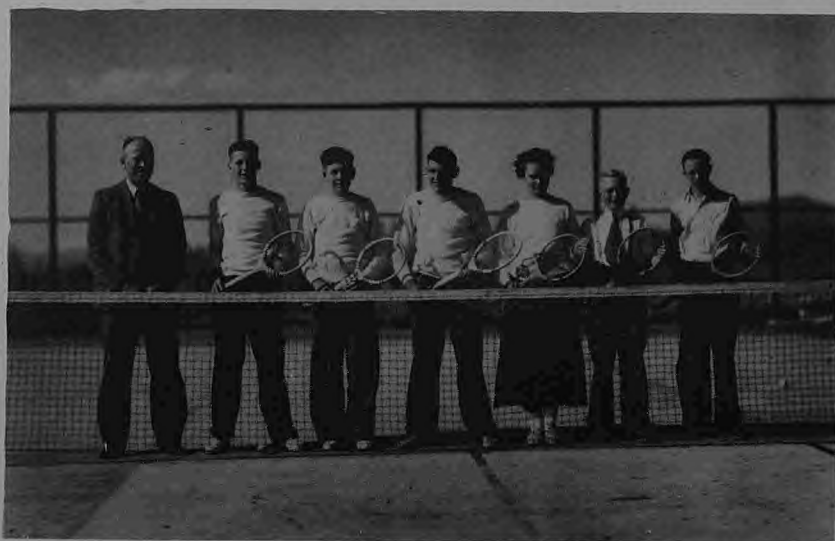
OPERA DANCE CAST



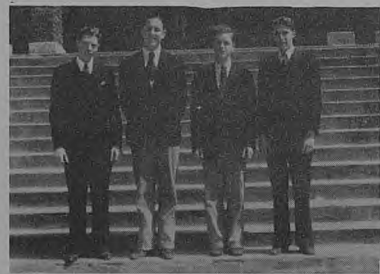
## Band



## Tennis Team



Tennis Team, left to right: C. B. Johnson, coach; Reed Woodland, Russel Nelson, George Stuart, Doris Pond, Dee Van Orden, Clair Karren.



# ATHLETICS







## Coach Whiting

To build men with character is the aim of Coach Whiting. On many occasions in the assembly the students have been impressed with the sincerity of the coach's appeal for clean play; they have been thrilled by the emphatic way in which he champions this cause.

The Student Body is proud of the clean way in which Coach Whiting's scrappy teams have fought for North Cache High.

# Football



Fourth Row, Standing, left to right: Coach Heber Whiting, Asel Buttars, Seth Christensen, Merlin Andrew, Raymond Nelson, Clyde Hendricks, Lloyd Egan, Gordon Cottle, Reed Johnson, Clayne Tripp, Cecil Wilding, Rex Feltman, Franklin Duce, Dallas Goodey, Howard McGee, Ephraim Falslev, Norman Smith.

Third Row: Herman Carlson, Myron Seamons, Dick Harris, Harold Carlson, Robert McCann, Paul Nelson, Harold Gutke, Leon Murray, Ted Aston, Douglas Harris, Hal Pitcher, Max Bergeson, Samuel Merrill, Douglas McQuarrie, Allan Baker, Woodrow Seamons.

Second Row: Jed Robinson, assistant athletic manager; Dean Rich, Wayne Purser, Lynn Richards, Cleon Jorgenson, Roy Miller, Don Anderson, Gordon Webb, Wayne Traveller, Paul Ricks, Gerald Hendricks, Leon Smith, Dee Shepherd, LeRoy Saunders, Kenneth Thornley, Bud Tout, Dick Lewis athletic manager.

First Row, left to right: Frank Meikle and Philip Bergeson, cheer leaders; Lindsay Rawlins, Glen Nelson, Douglas Hendricks, Clayton Lewis, LaMar Spackman, Irel Eppick, Van Noy, Norman Andrew, Jack Thompson, Milton Carver, Irwin Stoddard, cheer leader.

It has been a pleasure to work with men who accept the vicissitudes of life with stoical grace. It strengthens our faith in men.

The good fellowship of our athletic teams has been largely due to the fine support from the student officers, athletic committee, and athletic managers, cheer leaders, and others directly connected with this work. Much of the "stick-to-itiveness" of our men is the result of the fine leadership of our splendid captains.

Each year has seen more men take part in athletics. For example, the football squad has grown from 17 in 1928 to 65 this year. Other athletic activities have shown a like growth.

With regrets we bid farewell to our splendid Seniors and wish them well in their college work or where e'er they may be.

The Coach



REED JOHNSON  
Plant Medal



## Basketball



Back Row, left to right: Coach Heber Whiting, Lynn Pitcher, Owen Hillyard, Darrell Pitcher, Pearl Jenkins, LeRoy Pederson, Dean Rich, Sterling Nelson, Assistant Coach Norman Smith.  
 Second Row: Frank Peterson, Student Body president; Hal Pitcher, Melvin Jonas, Ottis Plant, DeMar Scrowther, Leon Smith, Clyde Hendricks, captain-elect; Eldridge Archibald, Paul Nelson, Amos Bair, athletic committee members.  
 Front Row: Dick Lewis, athletic manager; Reed Johnson, captain; Jed Robinson, assistant athletic manager.

## Lettermen



Back Row, left to right: Wayne Monroe, Leon Smith, Clayne Tripp, Reese Bullen, Alumnus, Donald Jackson, alumnus; Reed Johnson, Cordon Cottle, Norman Smith, alumnus.  
 Third Row: Coach Heber Whiting, Robert McCann, Mer'in Andrew, Harold Gutke, Owen Hillyard, Hal Pitcher, Harold Carlson, Leon Murray, Lynn Pitcher, G. Ellis Doty, alumnus.  
 Second Row: Cecil Wilding, Franklin Duce, Dallas Goodey, LeRoy Peterson, Darrell Pitcher, Russell Peterson, Ted Aston, Clyde Hendricks, Ottis Plant, Raymond Nelson, Doug Harris.  
 Front Row: Eldridge Archibald, Paul Nelson, Dean Rich, Melvin Jonas, Seth Christensen, Ephraim Falslev, Spencer Potts, alumnus, LaVan Hendricks, Rex Feltman.

## Girls' Intramural Basketball Team



Back Row, left to right: Bethea Day, Connie Anderson, Ruby Johnson, Alice Harris.  
Second Row: Lottie Brendt, La Rae Crockett, Helen Brendt.  
Front: Iris Baker, captain.

## Boys' Intramural Winners



Back Row, left to right, (A Team): Harold Carlson, HARRY Miles, Gordon Cottle, Norman Scrowthers, Rex Feltman, Ottis Plant, Reed Johnson.  
Second Row (B Team): Paul Nelson, Lear Jorgensen, Dick Harris, Reed Woodland, Doug Harris, Joe Allen.  
Front Row (C Team): Dallas Nelson, Dale Van Orden, Leslie Smith, Vance Waite, Bob Parson.





## Track Team

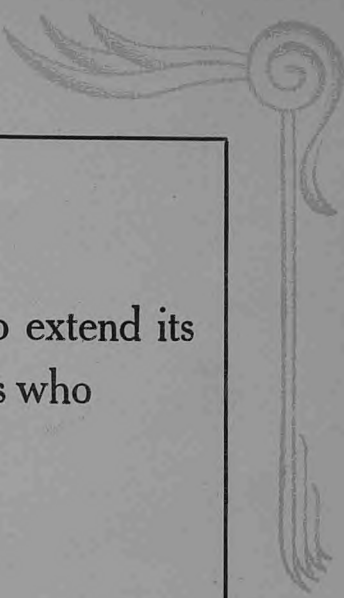


Back Row, left to right: Leon Murray, Sam Merrill, Harold Carlson, Howard McGee, Clyde Hendricks, captain: Gordon Cottle, co-captain: Reed Johnson, Phillip Bergeson, Ferrel Bybee, Afton Orchard.  
 Second Row: Lynn Pitcher, Sidney Hurren, Earl Saunders, Le Roy Miller, Wayne Traveller, Max Bergeson, Merlin Andrew, Arthur Bybee, Paul Taggart, Dayle Higginson.  
 Front Row: Harold Gutke, Lewis Smith, Paul Nelson, Robert McCann, Asael Buttars, Vern Haslam, Irwin Stoddard, Leon Smith.

## Cross Country Team



Standing, left to right: Raymond Lawrance, Philip Bergeson, Howard McGee.  
 Kneeling: La Van Hendricks, Wm. Mendenhall, LeRoy Miller, Paul Taggart.



The North Cache Student Body wishes to extend its  
appreciation to the following concerns who  
have assisted in producing the  
1935 POLARIS

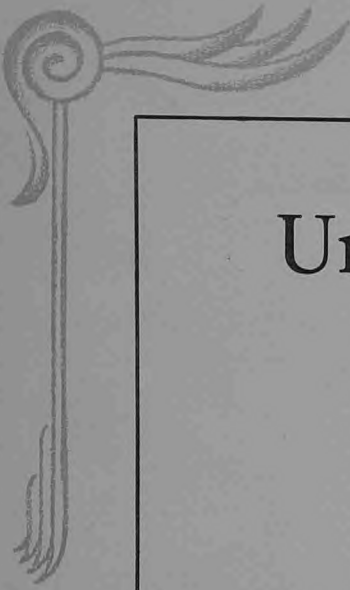
●

---

## Cardon Jewelry Co.

41 NORTH MAIN  
LOGAN, UTAH

For More Than 60 Years Cache County's  
Leading Jewelers.



# Union Knitting Mills C O M P A N Y

First West and Center Streets  
Logan, Utah

WE TAILOR TO YOUR MEASUREMENTS. A COMPLETE LINE  
OF KNITWEAR, SWEATERS, SLIPONS, ETC.

Styles are the very latest.  
Workmanship cannot be  
excelled. Quality superior.

DO NOT FAIL TO SEE THIS WONDERFUL LINE  
NOW ON DISPLAY

Special Discounts Given To Students

THE HOME OF  
BENNETT'S  
PURE  
PAINT

(Manufactured in Utah)

DISTRIBUTORS  
Rawlings Athletic  
Equipment

Logan Hardware Co.

Logan, Utah  
Wholesale—Retail

LEVEN'S

The Store of  
Quality—Style—Price

Men's and Boys'  
Complete  
Outfitters

Shoes and Hose  
For the Entire Family

Logan

"EXCLUSIVE AGENTS"

For

King, Cleveland and American  
Standard Band Instruments

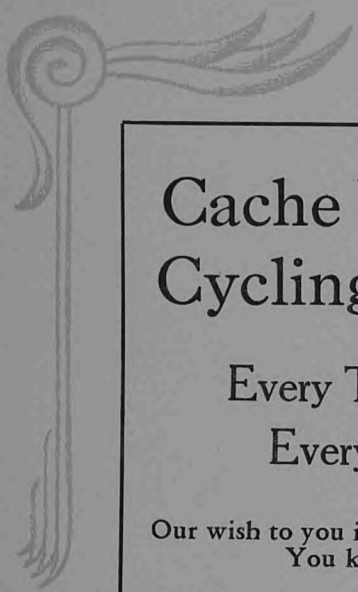
Thatcher Music Company

12 West Center Street

LOGAN

UTAH





## Cache Valley's Cycling Center

Every Thing For  
Every Sport

Our wish to you is for you to succeed.  
You know Al.

AL'S BIKE  
and  
Sporting Goods Co.  
19 West First North Logan, Utah

## The Bluebird

at

LOGAN, UTAH

# J. C. PENNEY CO.

Logan, Utah

"Outfitters for the Entire Family"

## I. G. A. Stores

RICHMOND, UTAH

Dealers in Meats and  
Green Groceries

WHERE PRICES AND SERVICE  
ARE RIGHT

H. F. OLSEN

Proprietor

## Fred & Max Cafe

Two Doors East  
of  
Cache Valley Bank  
Logan, Utah

The Most and Best  
For the Least

Where Our Service To You  
Is a Pleasure

See Us For

Box Lunches  
For Canyon Outings

Phone 50

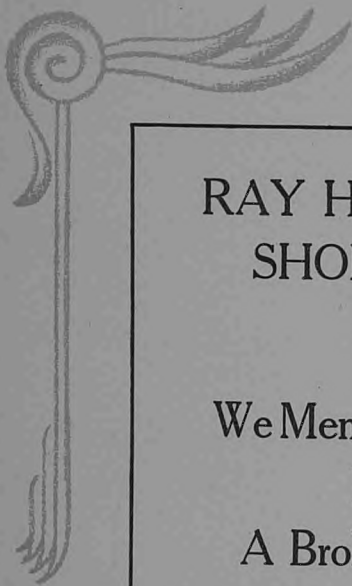
# CLARK & EARL

JOB

PRINTERS

Herald-Journal Building

Logan, Utah



RAY HICKSON'S  
SHOE SHOP

We Mend Anything  
But  
A Broken Heart

SMITHFIELD

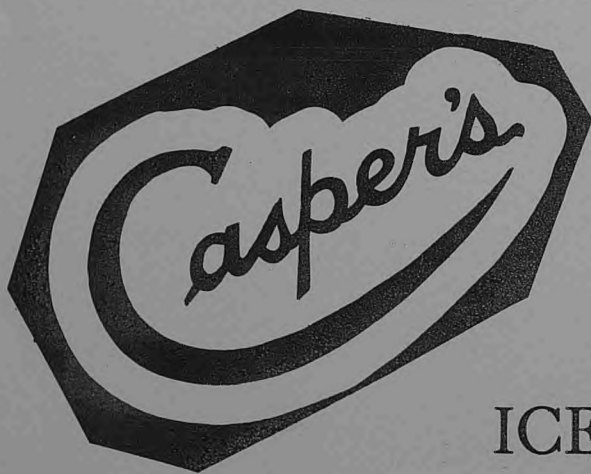
UTAH

THE BEST  
in  
Drug Store Merchandise  
and  
Soda Fountain Service

VAN DRUG CO.

Smithfield, Utah

THE REXALL STORE



ICE  
CREAM

You appreciate good  
service. We appreciate  
your business . . . . .

### Ladies Hair Cutting

A Specialty

SERVICE AND  
SANITATION

### North Cache Barber Shop

A. V. ATKINSON

Richmond, Utah

### PLANT AUTO CO.

#### "Quality Counts"

Efficient repair work and machine shop. We specialize in electrical work and acetylene welding, accessories and the famous Goodyear tires and tubes.

Compare our Prices  
Richmond, Utah, Phone 58

### Plant Service Station

"East Side of Highway"

Our gas and oils give your motor the pep. We handle only the best. Good Service.

Richmond, Utah, Phone 9

## A Good Foundation

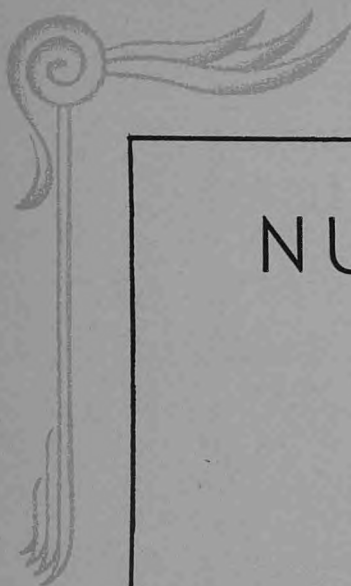
EDUCATION HAS LAID A GOOD FOUNDATION FOR YOUR FUTURE BUSINESS OR PROFESSIONAL LIFE. THAT TRAINING PLUS THRIFT THROUGH USE OF OUR FACILITIES WILL HELP YOU SUCCEED. MAY WE SERVE YOU.

RICHMOND BRANCH

First Security Bank of Utah

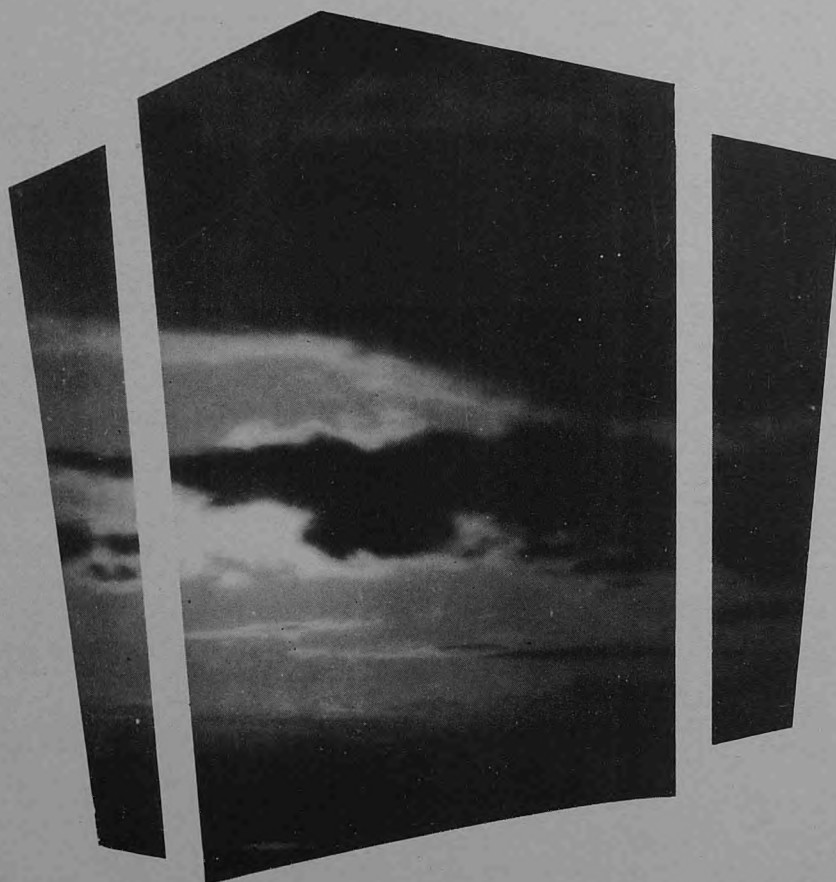
NATIONAL ASSOCIATION





# NU ART STUDIO

LOGAN, UTAH



*We picture with pride*





## AUTOGRAPHS

Dear Sir,  
I have enjoyed our association  
and wish you success in all (shop)  
that you attempt to do yours



*Rev. Standard*





PUBLISHERS  
PRESS  
NEW YORK